



THE SISTERS OF CHARITY OF AUSTRALIA

Keep in Touch

May 2008
Volume 8
Number 5

A newsletter for Sisters of Charity, their families and friends, and supporters of our Congregation

Mt Olivet Hospital Redevelopment



Artist's concept of the new hospital at Mt Olivet

Brisbane's Mt Olivet Hospital has begun work on a \$35 million upgrade and extension to its facilities to create a general medical hospital of excellence specialising in the area of general medicine, gerontology, palliative care, rehabilitation and other specialised programs focusing on chronic disease management.

These exciting upgrades are part of a planned \$140 million redevelopment of the Kangaroo Point area, and will allow for the introduction of new services as well as the strengthening of existing services, providing beautiful and con-

temporary facilities that will improve both patient comfort and operational efficiency.

With these new upgrades comes a further change - when the first phase of the redevelopment is completed towards the end of this year, the hospital will be renamed St Vincent's Hospital Brisbane. This new name has been chosen to reflect the name used by other Sisters of Charity hospitals in Toowoomba, Sydney and Melbourne. The name Mt Olivet however will still be retained for the Mt Olivet Palliative Care Service.

(continued on back page)

Jubilees

Sr Louise Hemingway - Platinum Jubilee



Sr Anne Louise Hemingway and Sr Josephine Hodges

Congratulations to Sisters Anne Louise Hemingway and Francis Xavier Purcell, residents of St Joseph's Village, who celebrated their respective Platinum (70 years) and Diamond (60 years) Jubilees of commitment as Sisters of Charity, on Tuesday, 29th January 2008, in the Chapel and later in the Activity Room at St Joseph's Village.

The celebration of this great event for the Jubilarians, their families, friends, staff and especially the Sisters of Charity, was expressed in a special Chapel ceremony and an enjoyable festivity in the Activity Room.

The Eucharistic Ceremony of Thanksgiving was prayed in the Chapel, where the absence through ill health of Fr John McMillan S.M. (the Chaplain) was acknowledged with regret. The main Celebrant was Fr Ray Farrell,

the Parish Priest of St John's, Auburn. The Chapel was adorned with a magnificent banner displaying "Impelled by the Love of Christ", the motto of the Sisters of Charity which incorporated the personal mottos of the two Sisters. Beautiful flowers adorned the Chapel. The selected music reflected the successful combination of tradition (Veni Sponsa Christi), the musical talents of the Sisters (the Choir) and the Responsorial Psalm (solo), Be exalted O God, the prayerful and dignified worship of our God.

The Jubilarians were delighted and privileged to welcome the Congregational Leader and her Councillors among the Congregation. Sr Laureen welcomed those present at the Celebration, Sr Elizabeth presented the special Papal Blessings. Sr Margaret contributed to the choir and Sr Maureen added the dignity of the Leadership

Sr Francis Xavier Purcell - Diamond Jubilee



Sr Francis Xavier Purcell and Mrs Mollie Bowd, her sister

Team to the Celebration. The Jubilarians were also delighted to welcome Sr Eileen Kean, who celebrated her Platinum Jubilee with her community prior to this date.

At the conclusion of the prayerful and inspirational liturgy, the excitement peaked as those present offered their personal congratulations to the Jubilarians and then all participants proceeded to the Activity Room.

Upon entrance, the large area was a pictorial pleasure. The décor was arranged by the Sisters and Staff, including floral decorations on each table, and colourful serviettes. Formalities concluded with Anne Louise and Frances Xavier each cutting her own cake. It was time then to partake of the delicious sandwiches, cakes, tea and coffee, prepared and served by the staff.

As this article was begun with congratulations offered to the two Sisters, it seems fitting to conclude with special congratulations to all those who contributed in any way to the success and enjoyment of this Celebration. May you be abundantly blessed and may you continue your work in the furtherance of the Kingdom of God. To keep in our memories the great prayerfulness, dignity, joy, peace and happiness of this Jubilee Celebration, it would be simple to make part of our lives the prayer contained in the refrain of the Responsorial Psalm.

My peace be upon you forever,
My love be within your heart
My Spirit will keep you safe all your days.

Open Day - Bethlehem Convent - Ashfield



Bethlehem Convent in Ashfield



The new lounge room

On Sunday 6th April, Srs Laureen, Maureen, Aileen, Natalie and Jean joined with Sr Elizabeth in celebrating the completion of the renovations and new extensions of our Ashfield convent. The day began at approx. 12 noon with the Sisters, led by Elizabeth, praying together the very beautiful Prayer of Blessing by John Donohue. They then assembled on the front verandah where Elizabeth offered a prayer of welcome for everyone who would enter this house. Then, moving through each room and sprinkling with holy water, Elizabeth prayed in gratitude for each sister who had ministered at Ashfield and for the many graces and blessings brought to our sisters through their lives of dedication here in this place. Then followed lunch – after which many of our sisters arrived to look through the house and join us for afternoon tea. The day proved most enjoyable for all!



The guest room

Refurbishment and Extensions

Our chapel has been relocated to one of the front rooms – formerly a bedroom. Each bedroom now has an ensuite and the original bathroom at the back and the laundry, have been demolished and replaced by a new bathroom and interior laundry. A new bedroom has also been added at the back of the house with ensuite, and the original lounge/ TV room has been extended. A new oven, stove top, microwave and added bench and cupboard space have been additions to the kitchen. The ceiling there has also been renewed. The house has been repaired, painted inside and out and carpeted throughout. The old garage has been demolished and replaced by a carport wide enough to house three cars.

We thank our CL&C and all concerned for this very lovely house.



The chapel

Mary Fankhauser rsc - Briar Terrace 1998-2008

On Tuesday 18th March 2008, Mary Fankhauser was farewelled with gifts and flowers – fitting tributes to Mary’s lovely gift of versatile flower landscaping within the popular Terrace Courtyard, and her devoted care to garden and guests over the ten years since the opening.

The celebration had both sadness and laughter as many gathered to share stories, a beautiful repast and gratitude to a lady loved by all the Terrace Community.

Bernadette Mundy, current Manager of the Terrace, shared a very warm tribute to Mary’s help during her first twelve months here – and Margaret rsc spoke of her great debt of gratitude to Mary as they travelled together through the years since its inception. It was a heart-warming, peaceful event enjoyed by all.



Mary Fankhauser receiving flowers from Bernadette Mundy

Sr Annette Celebrates 80th Birthday



Sr Annette with students from St Francis of Assisi Regional Primary School

From The Principal (Miss Louise Minogue) of St Francis of Assisi Regional Primary School.

*Dear Parents and Carers,
Our celebration for Sr Annette’s 80th Birthday was enjoyed by all who attended. Thank you to the children, staff and parents for making the day so special for Sr. Annie. Thank you also to the P & F for the beautiful gift, which was presented to Sr Annie at assembly on behalf of the school community.*

Our prayers and best wishes are with Sr. Annette during this special time in her life. Sr. Annette is a special and much loved person in our community whose love and care of children and families in our community is immensely valued by our whole community.

Home is more than a roof

Sr Claire Nolan Memorial Scholarship winner for 2007-08

Gaye Moore



Gaye Moore in front of the Sr Francesca Healy Cottage at St Vincent's Hospital in Melbourne

It was a leap of faith that landed Gaye Moore into the role of caring for homeless people, but it is a leap that Gaye believes was a turning point in her career.

With more than 30 years of nursing experience under her belt and an honours degree in Nursing, Gaye decided the new millennium was time for a change so she joined the team at St Vincent's Hospital in Melbourne in 2000 as a research nurse.

"It was the best decision I ever made," says Gaye. "I worked in aged care doing several projects and was inspired by the challenges and the people. Then the job as manager of the Sister Francesca Healy Cottage came up and I will always be grateful that my Director, Neth Hinton and her team, gave me the opportunity to work with such wonderful people, like Gen Cooper and Cathy Moore."

"The Cottage is unique to St. Vincent's," she says. "It offers a temporary, safe, and supportive home environment for homeless people so they can get the healthcare they need and they deserve. It represents all the values of the Sisters of Charity – it's a very special place that means health care is more accessible to homeless people."

"The Cottage, offers complete care for the whole person – we look at their physical health, mental health, social and housing situation, and offer 'time-out' in a safe and supportive environment."

"Care is offered in many ways. Sister Trish Shinnars is absolutely amazing for the volunteer work she does – she is so supportive and welcoming of everyone who walks in the door."

Gaye left The Cottage four years ago to pursue her PhD, studying the health needs of homeless people. It gave her great pleasure to see Byron Trevascus, who was a Volunteer at Prague House, become manager of The Cottage.

“Byron has a special empathy with the complex needs of the people we see. He is someone they trust.”

During her PhD studies, Gaye has developed a screening tool to assess homeless people who present to Emergency Departments.

It looks at a wide range of indicators including age, next of kin, previous medical history, addictions, mental illness and level of homelessness. The idea is that people most at risk of re-presenting to the Emergency Department are detected quickly and referred for appropriate treatment.

“The Sister Claire Nolan Memorial Scholarship of \$4000 has come at the perfect time,” says Gaye. “It will enable me to fund a pilot project here at StV’s to implement the screening tool and fine tune it.”

“The end goal for me would be to have all Emergency Departments screening for homeless presentations and providing appropriate support.”

“Based on my current research, we know that homeless people make up more than 10 percent of presentations to Emergency at StV’s, and that homeless people are three times more likely to present to Emergency than the wider population.”

“They often have a combination of mental illness, drug and alcohol addiction and a chronic illness like diabetes or liver disease.”

“And I strongly believe the real number is much higher than that. Homelessness doesn’t just mean not having a roof over your head –

there are four levels of homelessness: people living on the streets, people in emergency shelters, people in boarding houses, and people living in tenuous rental situations.”

“Many homeless people are not as visible as you would expect – they don’t fit into the picture we have of homelessness and they don’t want to be labelled because they struggle with community attitudes.”

“Sadly a large number are fatalistic about their circumstances and accept their poor health while struggling to manage day to day – so we don’t hear from them – they don’t have a voice like other sections of the community. It’s up to people like the Sisters to take the initiative.”

For many years The Cottage received no formal funding from the State Government because it was so unique it didn’t fit into any niche category.

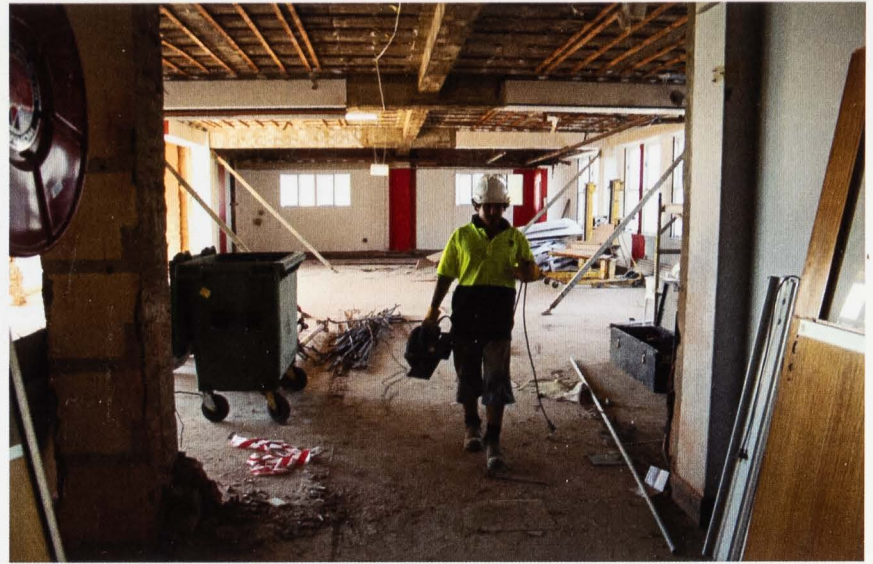
However it now has recurrent funding, and in last year’s Victorian State Healthcare Awards The Cottage won an award for Innovation in access to healthcare.

For Gaye, that is finally recognition that providing care to this marginalised group in society is important.

Gaye wants more facilities like The Cottage to provide temporary support and care, but she also argues that we need more supported accommodation for people with complex care needs – facilities with 24 hour support.

“Organisations like St Vincent’s and the Royal District Nursing Service Homeless Person’s Program do a fantastic job providing the link between the health service and the community, but we need a wider culture of support for homeless people if they are to truly get the care they need and deserve.”

Mt Olivet Hospital Redevelopment (continued)



Construction begins at the hospital at Mt Olivet

(continued from front page)

Among the upgrades is the addition of a four-storey extension to the building, which will allow for the expansion of existing wards, new retail facilities and additional lifts. All newly refurbished wards will contain single ensuited rooms, while the top level of the Hospital (level 8) will be refurbished to make way for modern consulting rooms with superb river views. The Hospital's façade will be refreshed, and the entry, exit and service roads to the hospital will also be improved to enhance traffic flow and create a safer environment for pedestrians.

New services at the hospital will be introduced in the areas of general medicine, gerontology, transitional care and specialised medical programs, while the Hospital's existing services of rehabilitation, palliative and interim care will be strengthened. A clinical services upgrade will take place and include expanded

radiology services, pathology, pharmacy, staff competency and related capability framework. This new redevelopment and direction will allow St Vincent's Hospital Brisbane to seek alliances and partnership opportunities with both private and public hospitals and health care funders, creating an effective integration of services across the health care spectrum in Brisbane. It is projected that by 2010 the Hospital will accommodate up to 60,000 bed days annually.

The Hospital's upgrade is part of a wider \$140 million plan to redevelop the whole Kangaroo Point site. This plan is still in the concept stage, but is expected to include aged care, retirement living, retail facilities and general medical services including GP practice, pathology, radiology and a multi-story car park, and is predicted to be complete by the end of 2009.



*KEEP IN TOUCH is published by the Congregational Office of the Sisters of Charity of Australia.
Level 1, 75 Grafton Street, Bondi Junction, NSW 2022*

Telephone 02 9367 1222 Fax 02 9367 1223 email James.Griffiths@rscoffice.com

PRIVACY STATEMENT The Sisters of Charity have a privacy policy statement detailing how personal information is managed, pursuant to the Privacy Act 1988 and the Privacy Amendment (Private Sector) Act 2000. People receiving this newsletter via mail will have their names on our database. This list is not used for any other purpose and will not be given to any other organisation. If you would like your name removed from this list, please contact the Congregational Office.